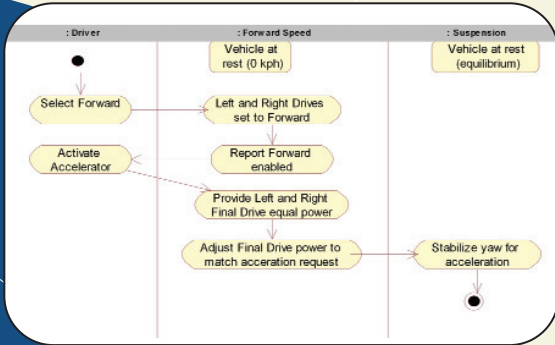


Systems Engineering

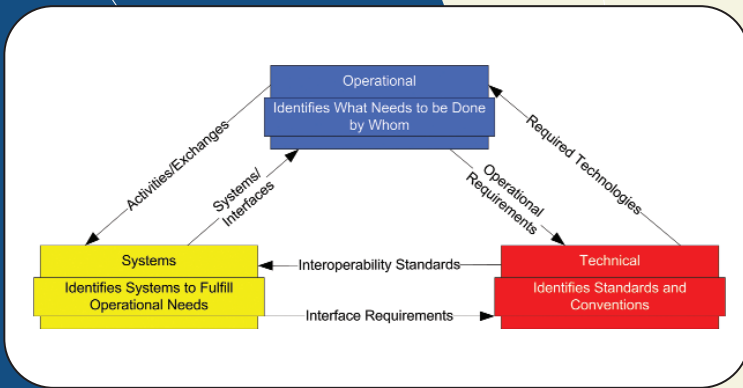
We take an **interdisciplinary** approach to systems engineering.



Our **model-based** development approach enables discovery of essential attributes early in the development process. Design efforts start with a requirements definition **analysis** that includes functional and architectural models. Implementation models are constructed with full traceability to requirements and interim architectural abstractions of the system.

Capabilities include:

- Operations Analysis
- Requirements/Specifications
- Use Case Analysis and Logical Architecture Models
- Design Trades
- Interface Design and Control
- Verification and Validation



Control System Design

CPC's engineers specify, design, and implement a variety of control systems.

- Single and multi-variable systems models
- Performance analysis

